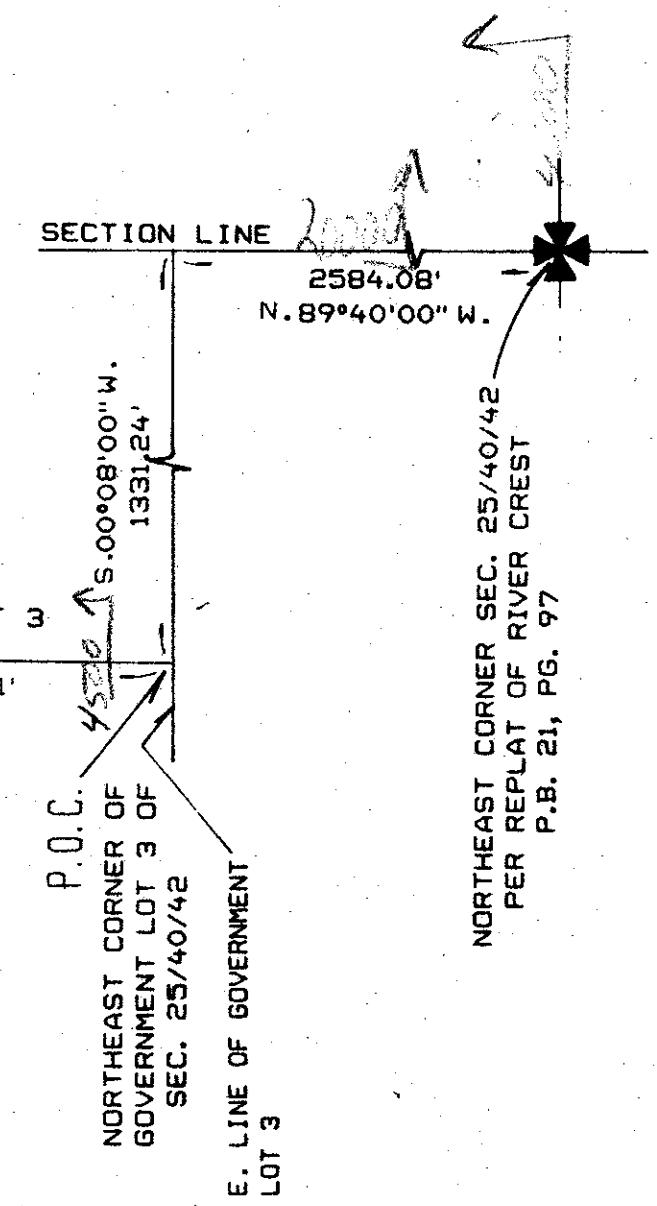
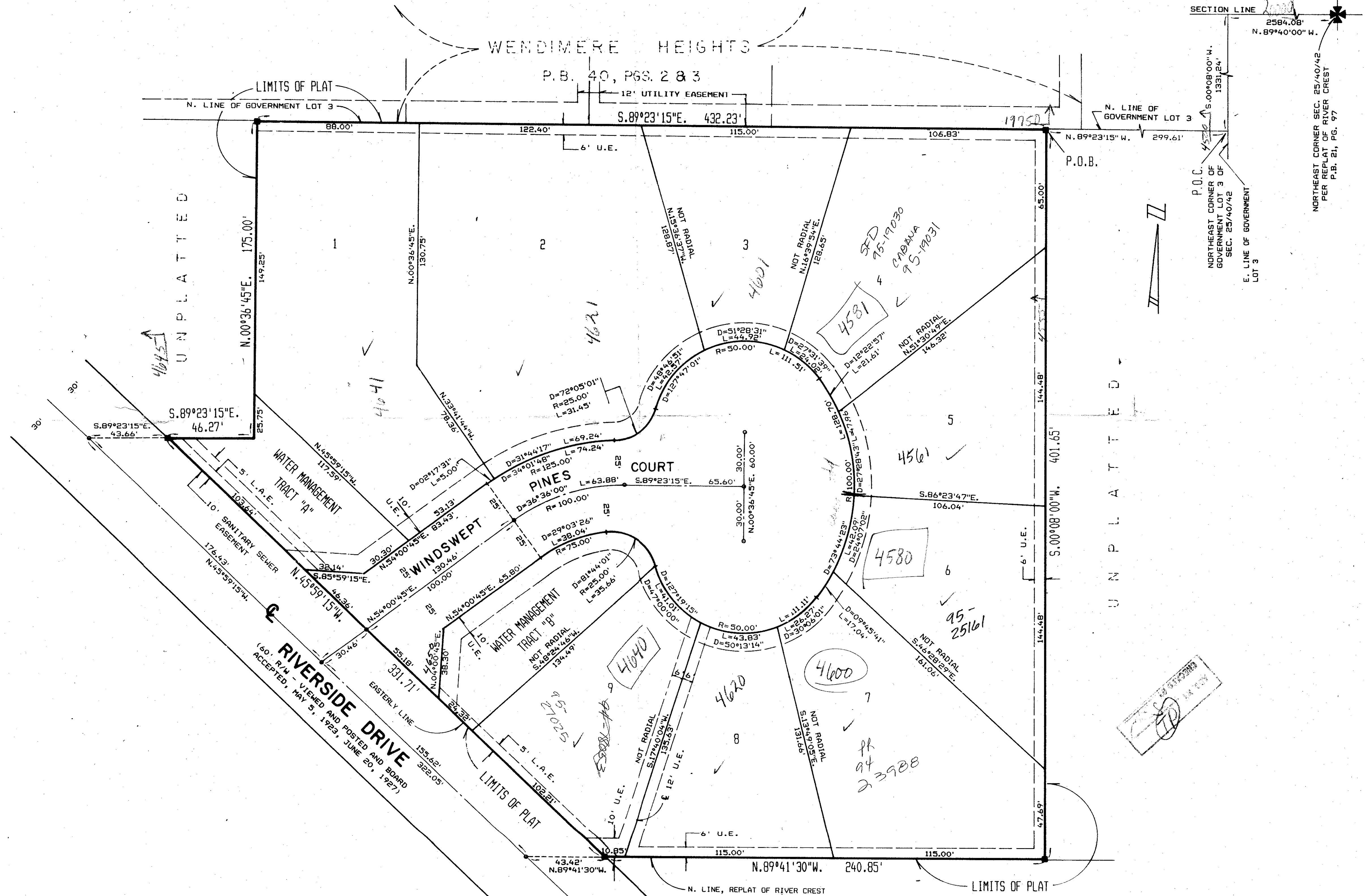
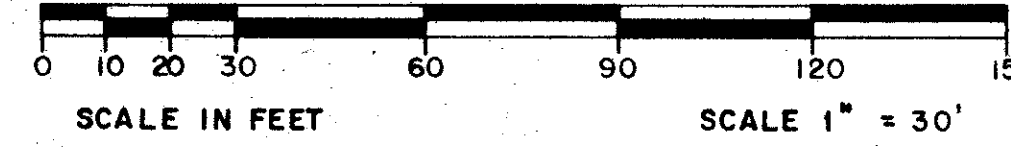


WINDSWEEP PINES
IN PART OF SECTION 25, TOWNSHIP 40 SOUTH, RANGE 42 EAST,
PALM BEACH COUNTY, FLORIDA.
SHEET 2 OF 2 SHEETS
JUNE 1988



SUBDIVISION: Windswept Pines
Block 41
Lot 131
RS
7/2/88
T.M.Z. 5

UNPLATTED

REPLAT OF
RIVER CREST
P.B. 21, PG. 97

0543-001

61/131

SCALE: 1" = 30'	NICK MILLER, P.C. Land Surveying	DRAWN BY:
DATE: JUNE 1988	Planning & Development Consultants	CHK
WINDSWEEP PINES		
2560 RCA Blvd. • Suite 105 Palm Beach Gardens, Florida 33410 (305) 627-5200		DRAWING NUMBER 88010